

# what presents itself

**A** ♩ = 69 **B**

4 2 3

11 **C**

3 2

**D**

*mp* *f* *tr*

22

*p* *mf* *f*

24 **E**

*mp*

26

*tr* *f*

28

*p* *mf* *f*

30 **F**

*mp*

what presents itself  
Flute

32 *tr*  
*f*

34 *p*

35 *mf* *f*

G *mp* *tr*

39 *f* *p*

41 *mf*

H *mp* *tr*

45 *f* *p*

what presents itself  
Flute

47

*mf* *f*

I

*mp* *f* *trm*

52

*p* *mf* *f*

J

54

*mp*

56

*mp* *f* *trm*

58

*p* *mf* *f*

K

60

*accel.*

*mp*

62

*mp* *f* *trm*

what presents itself  
Flute

64

*p* *mf* *f*

66

L ♩ = 80

*mp*

68

*f*

70

*p* *mf* *f*

M ♩ = 84

*mp* *p*

74

*f*

76

N ♩ = 88

*f* *mp*

78

what presents itself  
Flute

O ♩ = 92

80

82

P ♩ = 96

84

86

Q ♩ = 100

88

91

R ♩ = 104

S ♩ = 108

what presents itself  
Flute

**T**  $\text{♩} = 112$   
*accel.*

*ff*

**U**  $\text{♩} = 120$

*f*

**V**

*f*

**W**

*f*

**X**

*f*

**Y** **Z** *rit.*

*f*

121

123

what presents itself  
Flute

125



AA  $\text{♩} = 80$



BB



CC



DD



EE

137



140



FF



what presents itself  
Flute

146

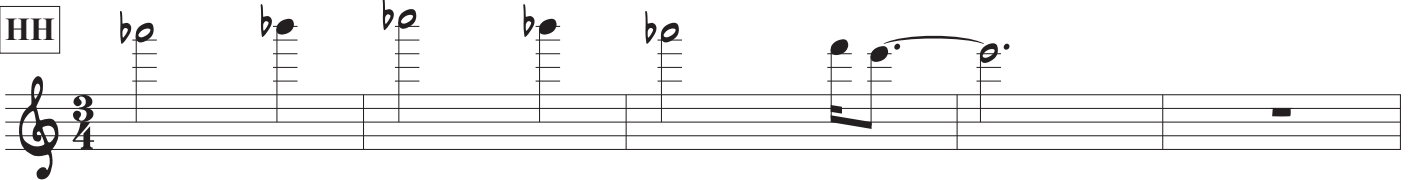


GG

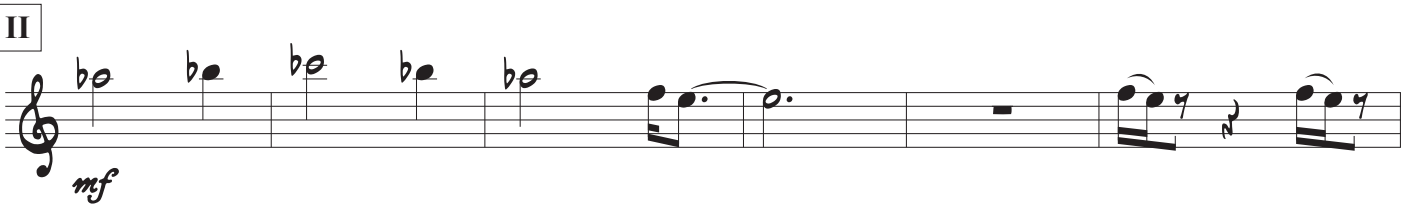
149



155



163



173

