

# james, arriving

ukulele, D tuning

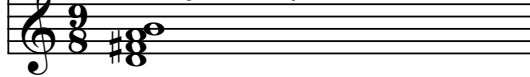
Andrea La Rose

open



hold ukulele up to your face, so that your mouth is over the tone hole. strum once at the beginning of each measure. lip-synch "wawawa" to the notated rhythm. it sounds cool. really.

sounding ukulele pitches:

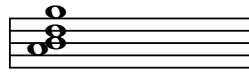
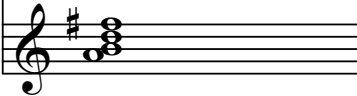


strum constantly, either eighths or sixteenths.

4



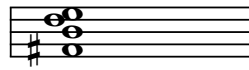
I've got five hun - dred and two sea - gulls, a



10



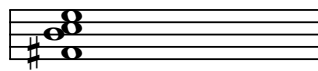
piece of fruit, un - us -



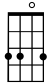
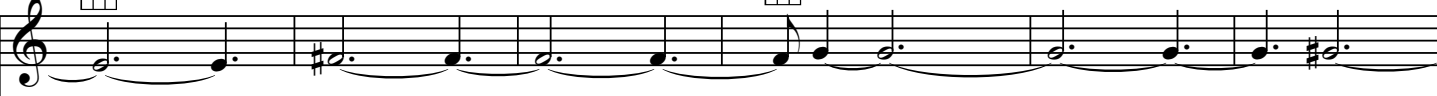
16

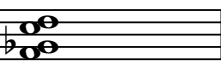
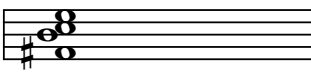


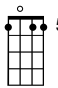

u - al friends,

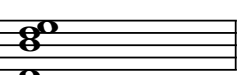
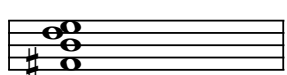


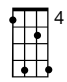

james, arriving

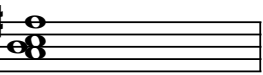
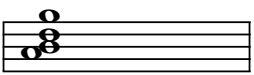
22    
\_\_\_\_\_ and \_\_\_\_\_ I'm \_\_\_\_\_ mov -

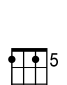
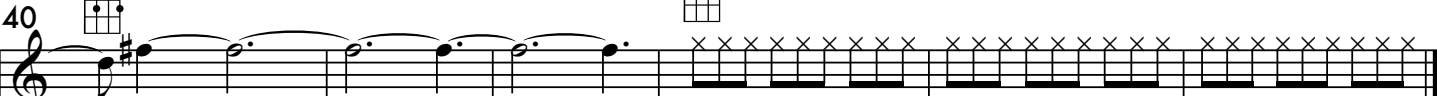
 

28    
- - - - - ing \_\_\_\_\_ to \_\_\_\_\_

34    
\_\_\_\_\_ Cen - - - - - tral \_\_\_\_\_

40    
\_\_\_\_\_ Park. \_\_\_\_\_

